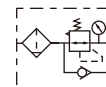


Preparation unit—GA Series

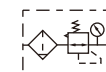
GAFR Series Filter & regulator



Reflux valve is attached



No reflux valve is attached



Ordering code

GAFR300 **10** **S** **W** **T** **K**

① ② ③ ④ ⑤ ⑥ ⑦ ⑧ ⑨ ⑩

| ① Model | ② Material of bowl | ③ Port size | ④ Drain type | ⑤ Type code |
|---------------------------------------|---|----------------------------------|--|--|
| GAFR200:GA200 Series filter-regulator | Blank: PC N: Nylon C: Metal | 06: 1/8" 08: 1/4" | Blank: Semi-auto drain A: Automatic drain | S: Standard L: Lower pressure [Note1] |
| GAFR300:GA300 Series filter-regulator | | 08: 1/4" 10: 3/8" 15: 1/2" | | |
| GAFR400:GA400 Series filter-regulator | | 10: 3/8" 15: 1/2" | | |
| GAFR600:GA600 Series filter-regulator | 20: 3/4" 25: 1" | | | |
| C: Metal | | | | |
| ⑥ Accessories | ⑦ Pressure gauge | ⑧ Filtering grade | ⑨ Thread type | ⑩ Reflux valve |
| Blank: Bracket J: No bracket | Blank: Circular with clip N: No pressure gauge | Blank: 40μm W: 5μm | T: NPT (Scale: bar/psi) | Blank: Without reflux valve K: with reflux valve [Note2] |

[Note1] The maximum work pressure of lower pressure type is 58psi(0.4MPa);

[Note2] Please refer to page 141 for details of reflux valve.

Product feature

1. Circular square pressure gauge which with clip and magnifier is used to save installation space.
2. The pressed-in self-locking mechanism can prevent the abnormal movement of the set pressure caused by external interfere.
3. Balanced design is adopted for the pressure adjustment mechanism.
4. Unique diversion structure spins the air flowing through to effectively separate the liquid from the air and reliably filter the solid grain.
5. The filtering grade includes 5 μ m and 40 μ m (optional).
6. Two drain types are available: semi-auto drain and automatic drain.
7. Three material of bowl are available: PC, Nylon and metal.
8. The bracket can be selected for installation.

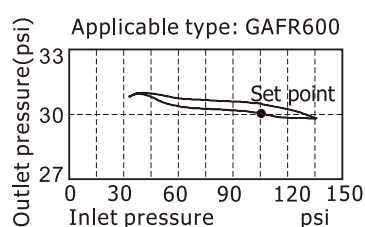
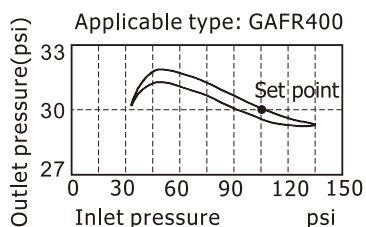
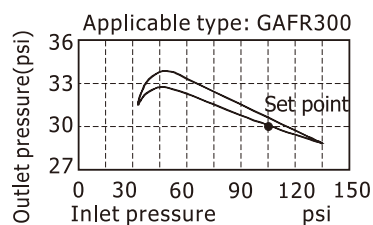
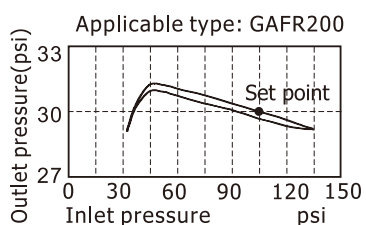
GAFR Series Filter & regulator

Specification

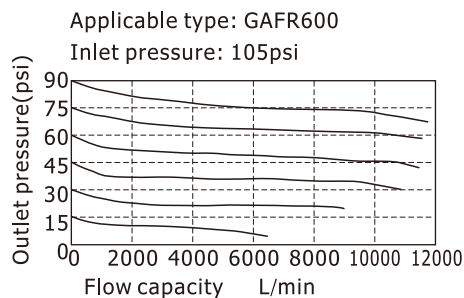
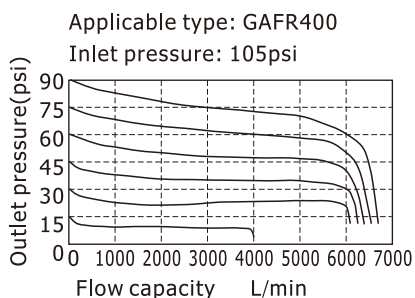
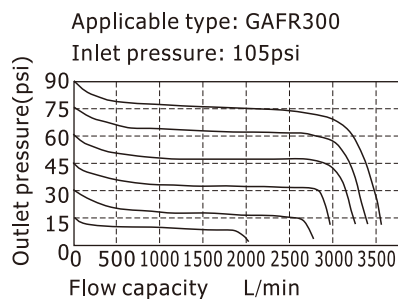
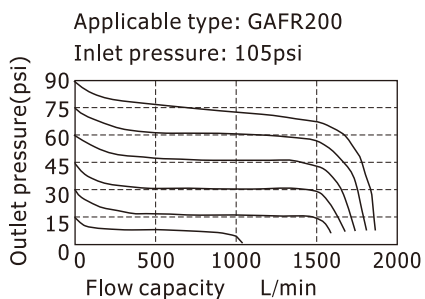
| Model | GAFR20006 | GAFR20008 | GAFR30008 | GAFR30010 | GAFR30015 | GAFR40010 | GAFR40015 | GAFR60020 | GAFR60025 |
|------------------------|------------------------|-----------|-----------|-----------|-----------|-----------|-----------|-----------|-----------|
| Fluid | Air | | | | | | | | |
| Port size [Note1] | 1/8" | 1/4" | 1/4" | 3/8" | 1/2" | 3/8" | 1/2" | 3/4" | 1" |
| Filtering grade | 40 μm or 5 μm | | | | | | | | |
| Pressure range | 20~130psi(0.15~0.9MPa) | | | | | | | | |
| Max. pressure | 145psi(1.0MPa) | | | | | | | | |
| Proof pressure | 215psi(1.5MPa) | | | | | | | | |
| Temperature range | -5~70°C(Unfreeze) | | | | | | | | |
| Capacity of drain bowl | 25CC | | 60CC | | | 100CC | | 205CC | |
| Weight | 290g | | 500g | | | 880g | | 1880g | |

[Note1] NPT thread is available.

Pressure chart



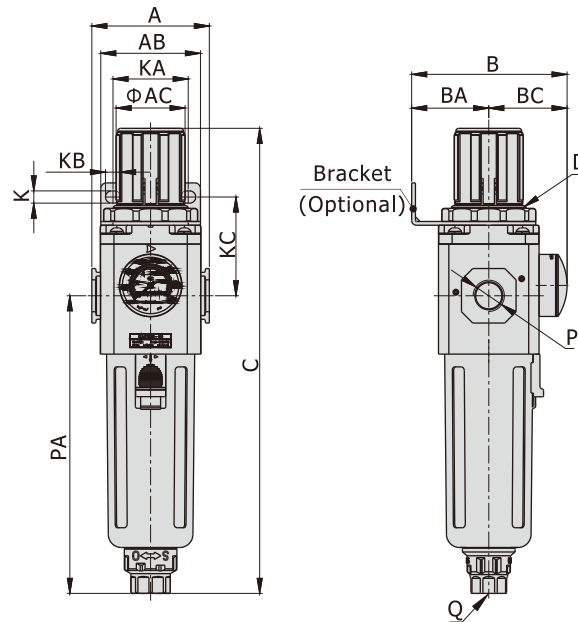
Flow chart



Preparation unit—GA Series

GAFR Series Filter & regulator

Dimensions



[Unit: mm]

| Model\Item | A | AB | AC | B | BA | BC | C | D | K | KA | KB | KC | P | PA | Q |
|------------|------|----|----|------|----|------|-------|---------|-----|----|------|------|------|-------|--------|
| GAFR200-06 | 52.5 | 55 | 31 | 69 | 30 | 39 | 192.5 | M33x1.5 | 5.4 | 34 | 15.4 | 52 | 1/8" | 120 | M5X0.8 |
| GAFR200-08 | 52.5 | 55 | 31 | 69 | 30 | 39 | 192.5 | M33x1.5 | 5.4 | 34 | 15.4 | 52 | 1/4" | 120 | M5X0.8 |
| GAFR300-08 | 62.5 | 53 | 38 | 82.5 | 41 | 41.5 | 247 | M40x1.5 | 6.5 | 40 | 8 | 52.5 | 1/4" | 158 | G1/4 |
| GAFR300-10 | 62.5 | 53 | 38 | 82.5 | 41 | 41.5 | 247 | M40x1.5 | 6.5 | 40 | 8 | 52.5 | 3/8" | 158 | G1/4 |
| GAFR300-15 | 62.5 | 53 | 38 | 82.5 | 41 | 41.5 | 247 | M40x1.5 | 6.5 | 40 | 8 | 52.5 | 1/2" | 158 | G1/4 |
| GAFR400-10 | 80 | 72 | 52 | 99 | 50 | 49 | 285.5 | M55x2.0 | 8.5 | 55 | 11 | 57 | 3/8" | 177.5 | G1/4 |
| GAFR400-15 | 80 | 72 | 52 | 99 | 50 | 49 | 285.5 | M55x2.0 | 8.5 | 55 | 11 | 57 | 1/2" | 177.5 | G1/4 |
| GAFR600-20 | 100 | 90 | 59 | 128 | 70 | 58 | 336.5 | M62x1.5 | 11 | 66 | 13 | 76 | 3/4" | 205 | G1/4 |
| GAFR600-20 | 100 | 90 | 59 | 128 | 70 | 58 | 336.5 | M62x1.5 | 11 | 66 | 13 | 76 | 1" | 205 | G1/4 |